

Quality  
Performance  
Efficiency  
Longevity

# Sharp Cut Off v2 Super Pulse Start Series

# The Unilux Range

by

# ELA

Environmental Lighting Australia Pty Ltd

## Description

The Unilux Sharp Cut Off v2 Super Pulse Start Series are exceptional high performance environmental type floodlights, proudly designed and manufactured in Australia by ELA.

Specifically designed for tennis court lighting the v2 series is available in two options, 575w medium case and 875w large case. Both options utilise new generation super pulse start metal halide lamps with outstanding long life ratings never seen before in metal halide lamps. With a highly efficient, refined optical system the v2 series delivers a more uniform, higher level of light. The innovative ELA product design incorporates a unique heat isolation system, combined with the latest technology components and manufacturing processes, which results in a superior product backed by an exceptional product warranty.

The v2 series reduces ongoing running and maintenance costs due to less frequent lamp replacements, longer lasting components and reductions in energy consumption.

## Applications

Tennis Courts - Club and Residential  
Bowling Greens  
Outdoor Netball & Basketball Courts  
Multipurpose Courts  
Futsal (soccer)



**AUSTRALIAN MADE**  
SUPPORT AUSTRALIAN MANUFACTURING

## v2 Key Product Developments

**The v2 release has been designed with two key aspects in mind - Efficiency and Warranty.**

### Efficiency

The highly refined optical system of the v2 Sharp Cut Off Series achieves greater efficiency (output), equating to more light on the court. It is important to understand that it is not just the lamp wattage or type that determines the light output of a floodlight - the reflector system plays a significant part in this. The v2 series combines a new highly efficient optical system with the latest technology super pulse start metal halide lamps to achieve industry leading performance.

The v2 S875 floodlight sets a new standard in efficiency. It produces 25% higher light output than the previous 1000 watt floodlight, which used the outdated large encasement BT56 lamp (still used by many manufacturers). The S875 floodlight also uses 12.5% less power than a 1000 watt floodlight and features a lamp life rating over 3 times that of a 1000w lamp.

### Warranty

The v2 design isolates the control gear set components from the heat produced by the lamp, greatly reducing the running temperature of the control gear components. This results in longer life of the control gear components and reduced chance of failure. This new design, combined with the reliability of super pulse start technology lamps, allows a significantly extended product warranty:

- **5 year control gear set warranty**
- **5 year lamp warranty for 875 watt (lamp only)**
- **7 year lamp warranty for 575 watt (lamp only)**

Please refer to page 3 for warranty details.



# Super Pulse Start Metal Halide Lamps

**Super Pulse Start (SPS) Metal Halide (MH) lamps are new generation lamps that have significant advantages over traditional Standard Metal Halide lamps.**

- **High level of lumen per watt efficiency**  
575 watt - 55,000 lumens (95 lumens/watt)  
875 watt - 90,000 lumens (102 lumens/watt)

- **Longer lamp life** that maintains higher output (better lumen maintenance). This reduces the frequency that lamps need to be replaced, greatly reducing maintenance costs. **575 watt - 40,000 hour rated lamp life**  
**875 watt - 30,000 hour rated lamp life**
- **Less colour shift** than Standard MH. This increases system colour uniformity, providing better quality light that maintains its bright white.

## Sharp Cut Off v2 575 watt SPS-MH

The Sharp Cut Off v2 575w SPS-MH provides advantages not seen before in tennis court lighting. The outstanding 40,000 hour lamp life will keep maintenance costs to an absolute minimum, maintain performance level minimum requirements and reduces power consumption by 40% compared to 1000 watt floodlights.

With options for both recreational and competition lighting levels, this luminaire is an ideal choice for the court owner or club looking for a system to minimize maintenance without sacrificing performance. The following are some system options for the Sharp Cut Off v2 575w SPS-MH:

### Recreation level tennis package (250 lux minimum requirement)

- 4 x Sharp Cut Off v2 575w SPS-MH
- Ideal for recreation standard play
- 300 lux of uniform light to the playing area

### Club level tennis package (350 lux minimum requirement)

- 6 x Unilux Sharp Cut Off v2 575w SPS-MH
- Ideal for club standard play
- 400 lux of uniform light to the playing area

### Premium tennis court package

The ultimate lighting system combining extremely high performance with low energy consumption and minimal maintenance. This package includes aesthetic improvements (unique mounting brackets) and increased spill light control.

- 6 x Unilux Sharp Cut Off v2 575w SPS-MH
- Unique ELA curved outreach mounting brackets
- Lower mounting height
- 480 lux of uniform light to the playing area
- Outstanding uniformity level of 0.82

## Sharp Cut Off v2 875 watt SPS-MH

The 875w SPS-MH is ideal for private, club and commercial tennis courts and many other sporting areas where a low mount lighting system is used. This is the ultimate in performance and low maintenance sports lighting for these applications.

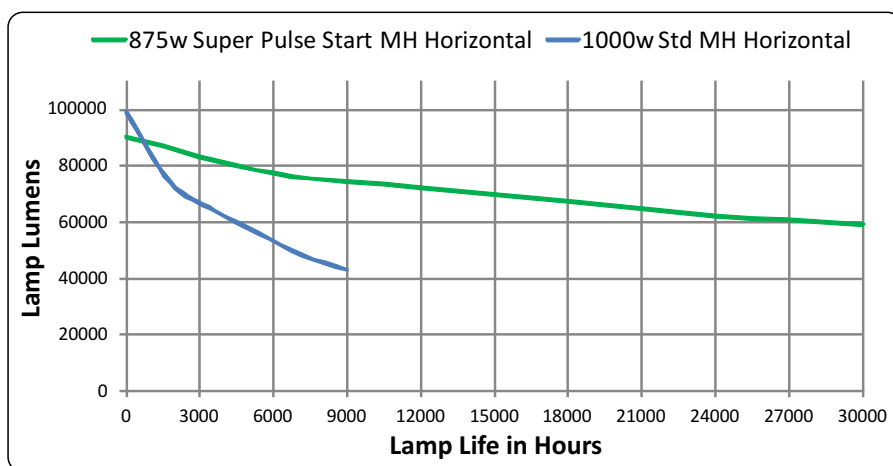
### 875w SPS-MH vs 1000w MH

The Sharp Cut Off v2 875 watt SPS-MH is the new generation environmental type floodlight to replace the traditional 1000w floodlights. Below are the key advantages compared to traditional 1000w MH floodlights:

- 12.5% less energy consumption
- 25% - 50% higher maintained output
- Over 3 times lamp life rating
- Improved lamp and component reliability
- 5 year product warranty

### 875w SPS-MH vs 1500w MH

The high output of the 875w SPS-MH has replaced the 1500w floodlight in the ELA range. The 875w lamp has over 6 times the rated lamp life and maintains comparable performance to the obsolete 1500w floodlight. Power saving of the 875w is 40% compared to the 1500w. The 875w luminaires are also more reliable and have significantly lower maintenance requirements.



The graph above shows the output of an 875 watt SPS-MH lamp compared to a standard 1000 watt MH lamp - both mounted in the horizontal position. Although the 1000w lamp has a slightly higher initial output, the 875w lamp has higher output for the life of the lamp, and a significantly longer lamp life. The new technology 875w SPS-MH lamp, combined with the highly precise ELA reflector system, results in outstanding performance, reduced maintenance costs (less frequent lamp replacements) and reduced power consumption by 12.5%.

*Optional*

## Increased Spill Light Control

The precise optical system of the Sharp Cut Off series provides high levels of spill control. As these lights are specifically designed for tennis, light on the court is maximized and spill light is reduced. However, in some cases the spill light control system will need to be increased, which can be achieved by opting for:

- **Increased spill light control (SLC)** with the Sharp Cut Off v2 Series, or
- Ultimate Cut Off floodlight.

The **SLC option** changes the internal configuration of the light to further reduce spill light and glare, without changing the appearance of the light, and with only minimal cost increase.

The **Ultimate Cut Off Floodlight** is an industry leading product that is designed to comply with the most stringent spill light regulations, without the application of unsightly external shields.





# Mounting Options

The Sharp Cut Off v2 Series are available with a wide range of mounting options to reduce installation time, increase versatility and optimise aesthetic appeal. Whether it be a new installation or adapting to an existing pole, the many mounting options complimented by our extensive range of brackets ensures easy installation.

## Integral Bracket Pole Adapter

Integral bracket (sleeve) located at the rear of the floodlight. Designed to minimize installation time and maximize aesthetic appeal. The light slips over the pole top and is secured by 4 stainless steel grub screws.

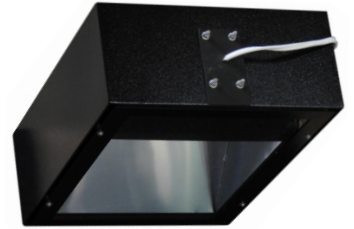
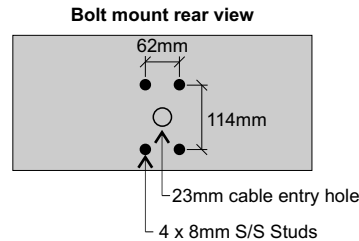
Available to suit the following post tops and spigot sizes:

OD Round	OD Square
60mm	75mm
76mm	100mm
90mm	
102mm	
114mm	



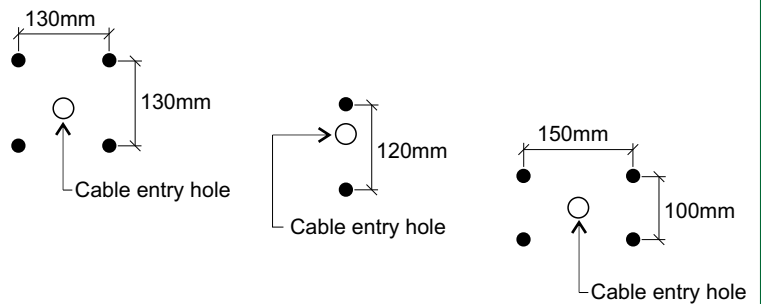
## Standard Bolt Mount

The standard configuration is 4 stainless steel studs with stainless steel nuts and washers located at the rear of the floodlight. Designed to mount onto our wide range of pole top brackets (please see our bracket catalogue). Made-to-order brackets can also be designed and manufactured in our in-house fabrication facility.



## Bolt Mount For Existing Poles / Brackets

Other bolt mounting options are also available to fit replacement light fittings, or where poles have been installed for other brands of lights. These mounting types fit directly to the existing pole which eliminates the need for additional bracket adapters or on-site modifications, saving installation time and reducing purchase costs. The diagrams (right) show the basic range of alternative bolt mount configurations. If the configuration you require is not displayed, please contact us, as most bolt configurations can be adapted to.



# Technical & Ordering Data

Product Code	Wattage	Lamp Type	Line Volts	Starting Current	Running Current	Mass kg	Sail Area sq. Mts
S575SPS-MH240	575w	Super Pulse Start Metal Halide	240v	3.5	2.9	20	0.15
S875SPS-MH240	875w	Super Pulse Start Metal Halide	240v	2.7	4.4	30	0.18
S875SPS-MH415	875w	Super Pulse Start Metal Halide	415v	1.6	2.5	30	0.18

To specify the mounting type when ordering use the following information:

**For bolt on mounting:** add "/BOLT" to the product code. Eg. S875SPS-MH240/BOLT

**For bracket type (integral adapter) mounting use the following:**

**To fit round post tops:** add "/R & the size required (60, 76, 90, 102 or 114)" to the product code. Eg. S875SPS-MH240/R76

**To fit square post tops:** add "/SQ & the size required (75 or 100)" to the product code. Eg. S875SPS-MH240/SQ100

Please note: All post top sizes are outside diameters.

**Optional Increased Spill Light Control:**

If this is required, add '-SLC' to the end of the product code.

## Dimensions

Wattage	A	B	C
575w	630	460	230
875w	730	540	243

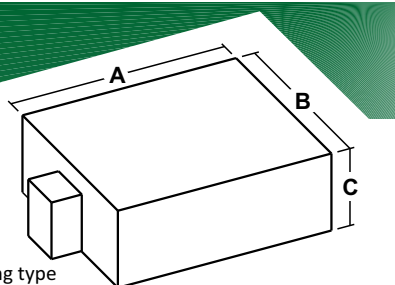


Diagram shown with bracket adapter mounting type

In the interest of product improvement specifications are subject to change without notice.

## Warranty

5 year warranty applies to the 875w lamp, control gear set (ballast, capacitor and ignitor), body/metalware, reflector system, electrical components and glass lens. Please contact ELA for full warranty details.

### 575w SPS-MH Lamp Warranty:

7 year warranty applies to the 575 watt super pulse start metal halide lamp only.

For technical support and contact details for your local distributor please contact us



## Environmental Lighting Australia Ptd Ltd

3/24 The Concourse, Cowes Vic 3922  
 PO Box 8154, Croydon Vic 3136  
 P: 03 5952 5587 F: 03 5259 3558  
 E: enquiries@tennislights.com

**Melbourne Office:**  
 P: 03 9723 2887 F: 03 9725 9314  
 E: luke@tennislights.com  
 W: www.tennislights.com